

Wire length encoder

CEW65M*4096/4096 V000 PBS+SSI *SL3005

OrderNo.:CEW65M-10148

20.5.2023 / 010103010105011365

Technical data

NO.OF STEPS/REV	8.192,000
NO. OF REVOLUTIONS	4.096,000
INTERFACE	PROFIBUS DP+SSI
CODE	PROGRAMABLE
SUPPLY VOLTAGE	11-27V
OUTPUT LEVEL	RS485
PROTECTION Class	IP64
OPERATING TEMPERATURE	0-60°C
FLANGE TYPE	ZB50
SHAFT TYPE	6RD/18,3
CONNECTOR TYPE	3XPG9
CONNECTOR-POSITION	PG RADIAL
PINOUT NO.	TR-ECE-TI-GB-0018
MATING PLUG	NO
OPTIONS ENC	12MBAUD
OPTIONS ENC	PNO-PROFILE CLASS.2
OPTIONS ENC	ROPE LENGTH TRANSMITTER
OPTIONS ENC	SL3005
DRAWING NO.	04-CEW65M-M0017
VERSIONNO	000
FIRMWARE NO	437826
DOCUMENTATION NO	DOKUMENTE
AL:	N
ECCN:	N

GL	Wellenausführung glatt / shaft type cylindrical
FL	Wellenausführung mit Fläche / shaft type with flat surface
N	Wellenausführung mit Nut / shaft type with slot
Hohlw	Hohlwelle / hollow shaft
Klemme	mit Klemmring / with clamping ring
Grundw	Grundwelle / fundamental shaft
SLG	Seillängengeber / cable retractor
ZB	Zentrierbund / centre ring
Tachofl	Tachoflansch / tachometer flange
DAG	DAG-Schutzgehäuse / DAG protective housing
TK	Teilkreis / pitch circle

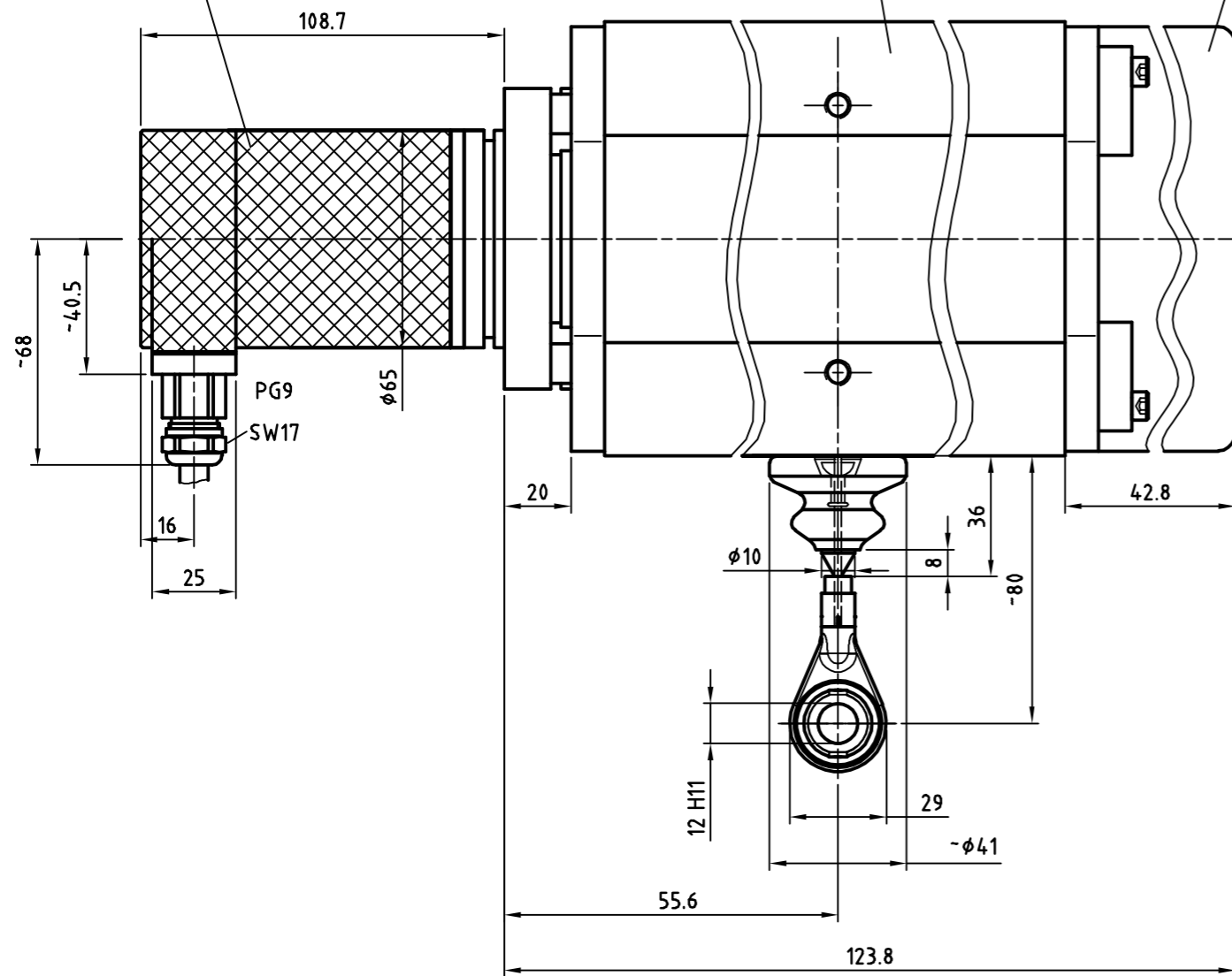
Subject to change.

Anbaubar:
Encoder CE-65
Flanschring 25-418-003
Grundwelle $\phi 6$

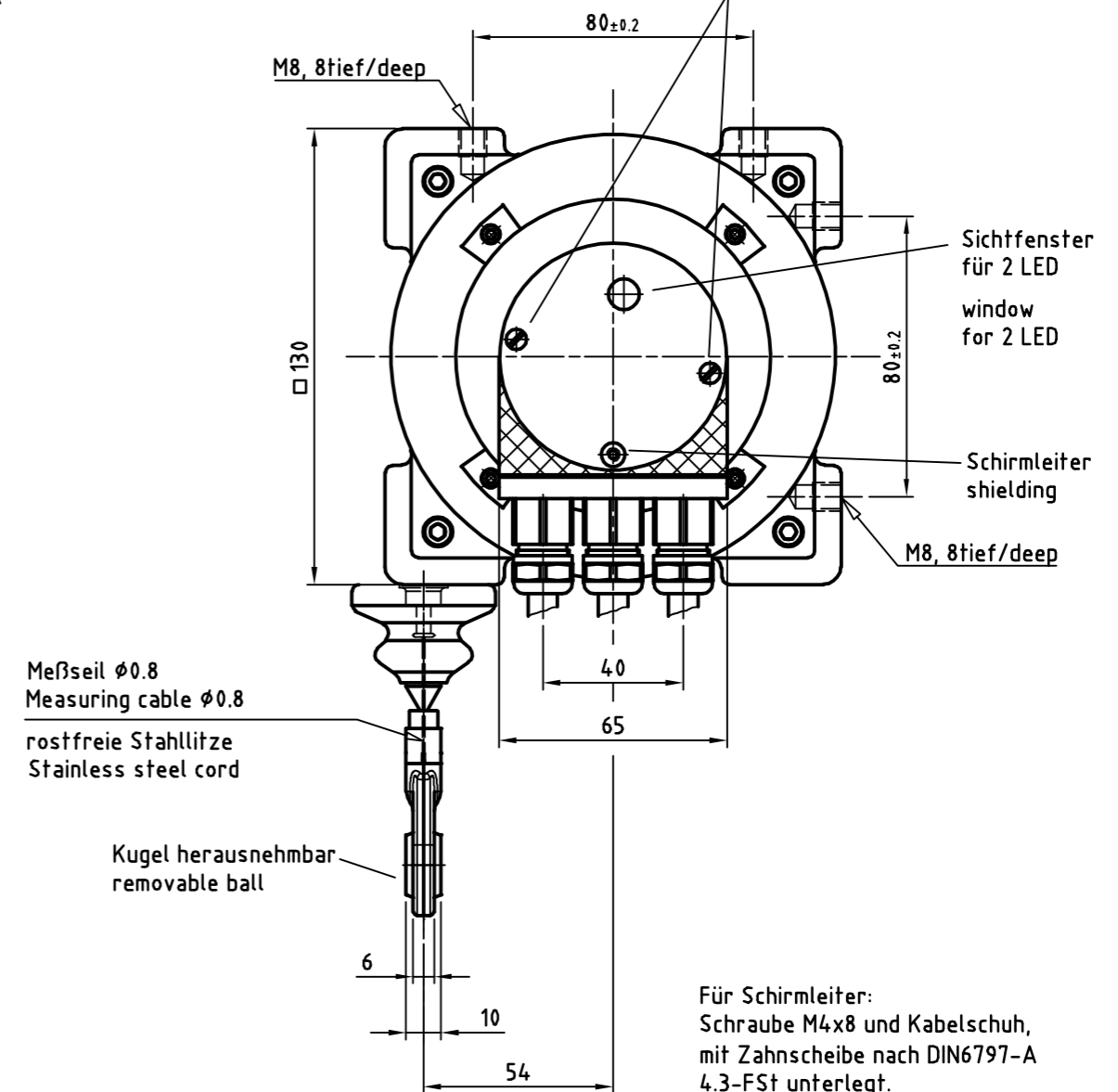
Arable:
Encoder CE-65
Mounting flange 25-418-003
Shaft $\phi 6$

Trommelgehäuse
Aluminium, eloxiert natur
Housing
Aluminium, anodized natural

Federkasten
Kunststoff, schwarz
Spring case
plastic, black



Anzugsdrehmoment 0.2Nm
starting torque 0.2Nm



Für Schirmleiter:
Schraube M4x8 und Kabelschuh,
mit Zahnscheibe nach DIN6797-A
4.3-FSt unterlegt.

For shielding
use metric screw M4x8 with forked terminal.
For good contact to housing use a
studded disc DIN6797-A 4.3-Fst.

Übersetzung

ca. 3Umdr./m
(individueller Wert siehe Typenschild)
0,05%
11N (Anfang) / 13N (Ende)
10m/s
R=16mm

Übers.-Genauigkeit
Feder-Rückzugkraft
Max.Verstellgeschw.
Biegeradius Meßseil

Gear ratio

ca. 3revol./m
individual value see type plate
0,05%
11N (origin) / 13N (end)
10m/s
R=16mm

Accuracy gear ratio
Spring pull-back power
Max. control speed
Bending radius, measuring wire cable

Artikel-Nr. und Steckerbelegung: siehe Datenblatt
Article-No. and pin connections: see data sheet

12	H11	± 0.11	$\frac{12.11}{12}$
Dimensions	Tolerances		

	TR Electronic GmbH Eglisshalde 6 78647 Trossingen Telefon 07425/228-0	Maßstab 1:2 DIN A3 Projekt-Nr.:
	Zeichnungs-Nr. nur für diese Ausführung gültig Drawing-No. only for this type valid	CEW-65-M, pull of rope encoder 0-5m rope
2 Text berichtigt 13.05.13 Flaig 1 Baulänge Encoder 16.03.06 Habetler	Datum Name Erstellt 12.09.2005 HABELTLER Bearb. 13.05.2013 FLAIG Gepr. Norm	Zeichnungs-NR./Drawing-No.: 04-CEW65M-M0017
www.tr-electronic.de DXF+Info: info@tr-electronic.de	Blatt 1	Blatt 1

**Connector pin assignment Profibus Encoder with PNO-Profile Class 2
Design with COMBICON terminals, Preset and SSI-Interface**

General note:

If the encoder is the last station in the profibus line, the DIP switches *DIP1* and *DIP2* for the profibus terminator (switching-on of the terminal resistance) must be switched on. Otherwise they must be switched off.

The profibus also works when the encoder is removed. Is the encoder the last station in the profibus line, the reference potential of the terminator resistances is missing!

In order to enable a separate wiring of incoming and outgoing signals the profibus terminals have two connection possibilities.

TR-Electronic recommends for the operation to use only bus cables certified by the Profibus User Organization (PNO). For the + and - signals of SSI cycle and SSI data twisted core pairs are to be used.

With the BCD address switches 10^0 and 10^1 the station address for the profibus is set from 3 to 99.

Explanation of terms:

MINI-COMBICON 5/6-pole:	Connector Phoenix MINI-COMBICON 8A/125V, grid 3.5 mm		
Connection:	inflexible 0,14 - 1,5 mm ²	flexible 0,14 - 1 mm ²	Conductor size (AWG) 26 - 16
	flexible with wire end sleeve without plastic sleeve: 0,25 - 0,5 mm ²		flexible with wire end sleeve with plastic sleeve: 0,25 - 0,5 mm ²
US:	Supply voltage, 11 - 27 V DC		
US-input:	1-level > +8V, 0-level < +2V, up to ±35V, 5 kOhm		
US-output:	1-level > US-2V, 0-level < 1 V, up to 100mA		
Opto-input:	Opto coupler for cable transmitter (RS485)		

X1 - MINI-COMBICON 5-pole

- Pin 1 Profibus DataB
- Pin 2 Profibus DataA
- Pin 3 Profibus M5V2
- Pin 4 *Do not wire!*
- Pin 5 Opto-input for SSI-Clock +

X2 - MINI-COMBICON 5-pole

- Pin 1 RS485-output for SSI-Data +
- Pin 2 US-input for Preset 1
- Pin 3 US-input for Preset 2
- Pin 4 0V-Ground
- Pin 5 US-Power Supply

X3 - MINI-COMBICON 6-pole

- Pin 1 Profibus DataB
- Pin 2 Profibus DataA
- Pin 3 Profibus M5V2
- Pin 4 *Do not wire!*
- Pin 5 Opto-input for SSI-Clock -
- Pin 6 RS485-output for SSI-Data -

